

Tourist Information and Community Center Zierow

Im Dorfe 3
23968 Zierow

Tel: +49 38428 637930
Fax: +49 38428 63 79 31

info@gemeinde-zierow.de
www.gemeinde-zierow.de

Information for people with walking difficulties and wheelchair users

Information on accessibility was reviewed on September 15, 2020 as part of the quality criteria / system "Tourism for all".

Images of the building/object



Touristisches
Informations- und
Gemeindezentrum
Zierow

©Sabine Stöckmann

Parking

Parking lot



Parking lot

©Anne Wilken



Parking lot

©Anne Wilken

There is a general parking lot available.

There is/are 1 parking space(s) for people with disabilities.

Parking space width: 400 cm

Parking space length: 500 cm

The surface quality of the car park is not vibration free and is easy to walk and drive on (e.g. asphalt, narrow-jointed slabs, etc.).

Distance from the parking space(s) for people with disabilities to the entrance area: 11 m

The parking space(s) for people with disabilities is/are not marked.

External path



External path

©Anne Wilken

Width of the path: 200 cm

Length of the path: 11 m

Due to its surface characteristics, the path is not vibration-free and easy to walk on (e.g. asphalt, narrow-jointed slabs, etc.).

Maximum longitudinal gradient of the path: 0 %

Maximum longitudinal gradient over a distance of 0 m.

Public transportation

Train/Bus platform/Ship dock

Distance from the train/bus platform/ship pier to the entrance area for people with disabilities: 220 m

Width of the manoeuvring space along the train/bus platform/ship pier: 130 cm

There are no seating areas available.

There is no written train/bus platform/ship pier information available.

External path 2



External path 2

©Anne Wilken

Width of the path: 160 cm

Length of the path: 220 m

Due to its surface characteristics, the path is not vibration-free and easy to walk on (e.g. asphalt, narrow-jointed slabs, etc.).

Maximum longitudinal gradient of the path: 6 %

Maximum longitudinal gradient over a distance of 10 m.

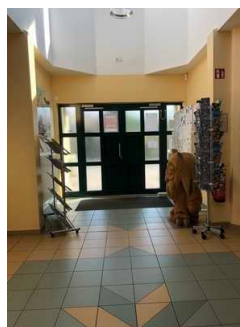
Entrance

Entrance area



Entrance area

©Anne Wilken



Entrance area

©Anne Wilken

Clear width of the passageway: 200 cm

Type of door: double leaf

The door is opened requiring the users own effort. The door is opened by a service technician.

The WIDTH of the smaller manoeuvring area in front of / behind the door: 200 cm

The DEPTH of the smaller manoeuvring area in front of / behind the door: 200 cm

The threshold height: 1 cm

Customer space

Room



Room

©Anne Wilken

The WIDTH of the room: 400 m

The DEPTH of the room: 8 m

The width of the narrowest passageway in the room: 200 cm

There is no seating available.

Additional information only available in German: Der Eingang der Ti führt direkt in den Informationsraum mit Foyer und Sitzecke..

Counter 2

Counter/Cash Desk



Counter/Cash Desk

©Anne Wilken



Counter/Cash Desk

©Anne Wilken

The WIDTH of the manoeuvring space in front of the counter: 200 cm

The DEPTH of the manoeuvring space in front of the counter: 200 cm

The counter / cash desk is at its highest point 72 cm high.

The counter / cash desk is at its lowest point 72 cm high.

There is no other, equivalent communication possibility while in a sitting position.

Corridor/way/aisle inside 3



Corridor/way/aisle
inside 3

©Anne Wilken

Length of the corridor/way/aisle: 4 m

Minimum width of the corridor/way/aisle: 200 cm

Existing passageways are at least 88 cm wide.

Public toilet

Public toilet



Public toilet

©Anne Wilken



Public toilet

©Anne Wilken



Public toilet

©Anne Wilken



Public toilet

©Anne Wilken

Clear width of the passageway: 92 cm

Type of door: single leaf

The door is opened requiring the users own effort.

The smaller manoeuvring area in front of / behind the door is 260 cm deep and 200 cm wide.

The threshold height: 0 cm

The door opens outwards.

The toilet door can be opened without a key.

There is a uni-sex toilet.

There is no toilet available for people with disabilities.

The depth of the toilet bowl: 53 cm

The WIDTH of the manoeuvring space left of the toilet: 116 cm

The DEPTH of the manoeuvring space left of the toilet: 230 cm

The WIDTH of the manoeuvring space right of the toilet: 116 cm

The DEPTH of the manoeuvring space right of the toilet: 250 cm

The WIDTH of the manoeuvring space in front of the toilet: 250 cm

The DEPTH of the manoeuvring space in front of the toilet: 170 cm

The height of the toilet seat: 49 cm

Access to the manoeuvring space right or left of the toilet is restricted. The passage width is: 116 cm.

There is no grab rail on the left side of the toilet.

The height of the left grab rail: 86 cm

The length of the left grab rail: 85 cm

The grab rail on the left of the toilet cannot be flipped-up.

There is no grab rail on the right side of the toilet.

The height of the right grab rail: 86 cm

The length of the right grab rail: 85 cm

The grab rail on the right of the toilet cannot be flipped-up.

There is no grab rail available.

The distance between the left and right grab rail is 72 cm.

The WIDTH of the manoeuvring space in front of the sink: 250 cm

The DEPTH of the manoeuvring space in front of the sink: 160 cm

The height of the sink (front upper edge): 90 cm

The sink is wheelchair compatible at a height of 67 cm and a depth of less than 30 cm.

The mirror is not visible while standing or sitting.

There is a cord as an alarm trigger available.

The height of the alarm trigger from the floor: 100 cm

Corridor/way/aisle inside



Corridor/way/aisle
inside

©Anne Wilken

Length of the corridor/way/aisle: 10 m

Minimum width of the corridor/way/aisle: 200 cm

Existing passageways are at least 88 cm wide.

Aids

Alarm/Aids

Assistance dogs may not be brought to the establishment.

Dorfmuseum und Büchertauschcke

Showroom/Hall



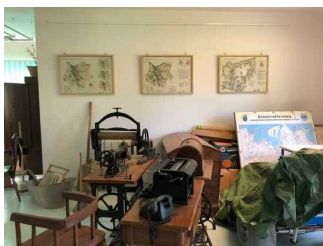
Showroom/Hall

©Anne Wilken



Showroom/Hall

©Anne Wilken



Showroom/Hall

©Anne Wilken



Showroom/Hall

©Anne Wilken



Showroom/Hall

©Anne Wilken



Showroom/Hall

©Anne Wilken



Showroom/Hall

©Anne Wilken



Showroom/Hall

©Anne Wilken



Showroom/Hall

©Anne Wilken

Clear width of the passageway: 190 cm

Type of door: double leaf

The door is opened by a service technician.

The WIDTH of the smaller manoeuvring area in front of / behind the door: 200 cm

The DEPTH of the smaller manoeuvring area in front of / behind the door: 200 cm

The threshold height: 0 cm

Additional information only available in German: Die Zweiflügeltür steht immer offen, wenn die Ti besetzt ist.

The width of the narrowest passageway in the room: 140 cm

The exhibited objects are not predominately visible, perceptible or recognisable when seated.

The information on the exhibits is predominately readable when seated.

Information is provided in writing.

Corridor/way/aisle inside 4



Corridor/way/aisle inside 4

©Anne Wilken

Length of the corridor/way/aisle: 4 m

Minimum width of the corridor/way/aisle: 200 cm

The width of the path/corridor is not restricted.

Additional information only available in German: Das Dorfmuseum befindet sich direkt neben dem Besucherraum und Foyer.

Veranstaltungsraum der TI

Room 2



Room 2

©Anne Wilken



Room 2

©Anne Wilken



Room 2

©Anne Wilken



Room 2

©Anne Wilken

Clear width of the passageway: 190 cm

Type of door: double leaf

The door is opened requiring the users own effort. The door is opened by a service technician.

The WIDTH of the smaller manoeuvring area in front of / behind the door: 200 cm

The DEPTH of the smaller manoeuvring area in front of / behind the door: 200 cm

The threshold height: 0 cm

The WIDTH of the room: 8 m

The DEPTH of the room: 11 m

The width of the narrowest passageway in the room: 200 cm

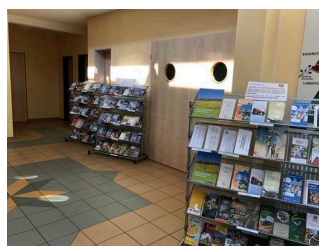
There is no seating available.

Corridor/way/aisle inside 5



Corridor/way/aisle
inside 5

©Anne Wilken



Corridor/way/aisle
inside 5

©Anne Wilken

Length of the corridor/way/aisle: 4 m

Minimum width of the corridor/way/aisle: 200 cm

The width of the path/corridor is not restricted.